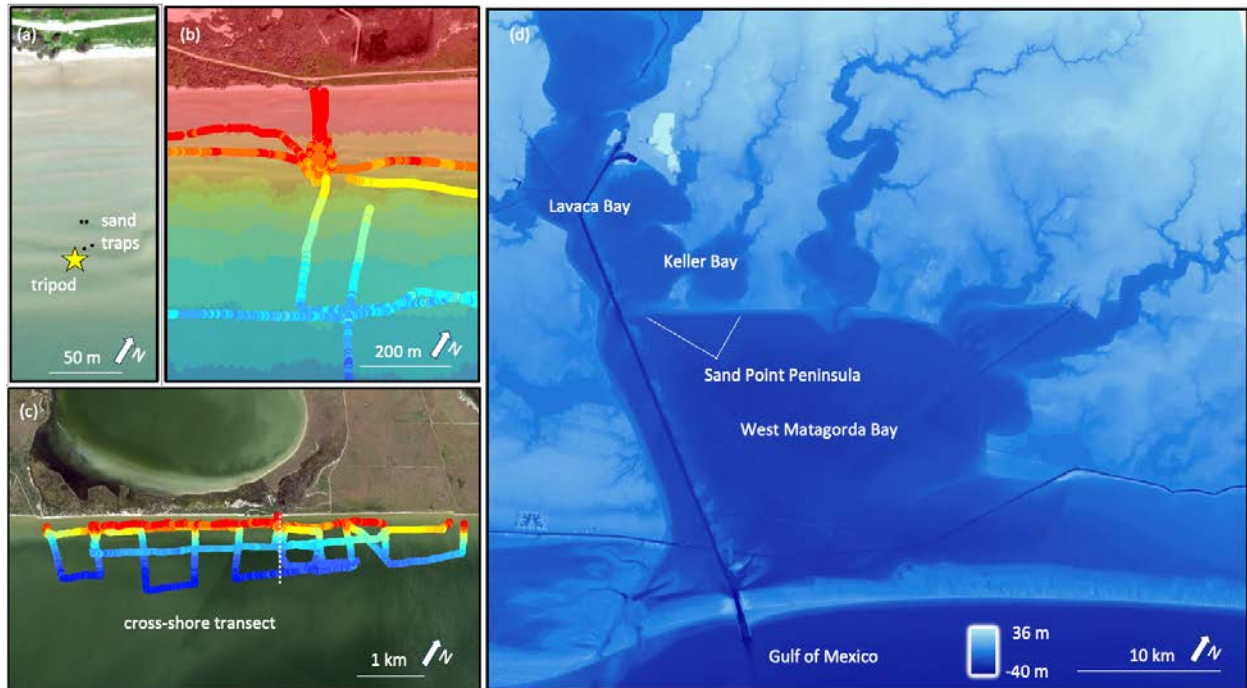


Deliverable 1 - High resolution topo-bathymetric map of study area

(NB: This PDF version depicts the topo-bathymetric map plus other bathymetric data. The full map product is very large ~275.9 MB in size, and will be sent at the conclusion of the project.



(a) The sensor tripod (yellow star) and sand traps were located 150 to 180 m offshore in West Matagorda Bay. (b-c) The topo-bathymetric point dataset for the immediate study area surrounding the tripod (colored dots), with 1 km long cross-shore transect (dotted white line), and (d) bathymetric dataset of the wider region, used for modeling purposes.